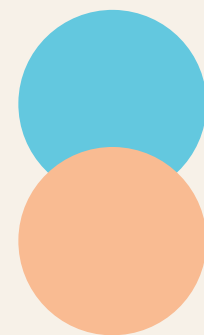


# ICE CREAM

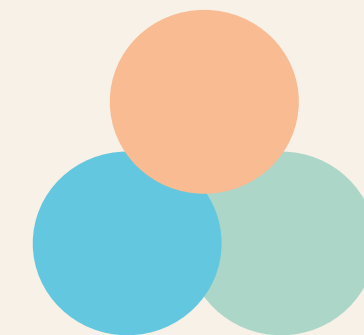
CHOOSE FROM A VARIETY OF FLAVORS



**SINGLE SCOOP**  
**5<sup>19</sup>**



**DOUBLE SCOOP**  
**7<sup>49</sup>**



**TRIPLE SCOOP**  
**8<sup>99</sup>**

## DELICIOUS HANDMADE EXTRAS

**WAFFLE CONE** **1<sup>79</sup>**

**1 TOPPING** **99<sup>¢</sup>**

**WAFFLE BOWL** **1<sup>99</sup>**

**2 TOPPINGS** **1<sup>99</sup>**

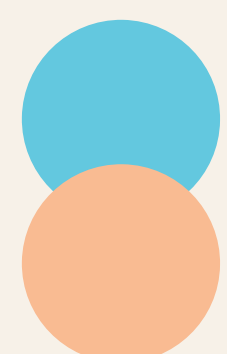
**3 TOPPINGS** **2<sup>99</sup>**

**ICE CREAM SANDWICH** **7<sup>99</sup>**

**ANY ICE CREAM FLAVOR**  
*BETWEEN TWO CHOCOLATE CHIP COOKIES*

# SUNDAES *with*

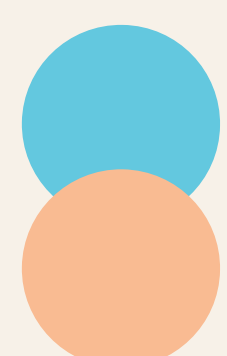
## FRESH WHIPPED CREAM



### DOUBLE TROUBLE

7<sup>49</sup>

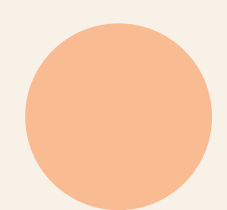
ANY ICE CREAM *WITH* 1 TOPPING AND 1 SAUCE



### PECAN TURTLE

10<sup>49</sup>

SALTED BUTTER CARAMEL ICE CREAM *WITH* HOT FUDGE, TOASTED PECANS & SALTED CARAMEL SAUCE



### MINI HOT FUDGE

6<sup>99</sup>

ANY ICE CREAM *WITH* HOT FUDGE

Please inform your server if you have a food allergy and speak to a manager. Many of our dishes contain ingredients known to be food allergens and all dishes are prepared in an area where products containing wheat, eggs, milk, fish, shellfish, tree nuts, peanuts and soybeans are also prepared. We cannot guarantee that menu items are allergen free and we encourage our customers with food allergies to make safe and informed choices.

# DRINKS

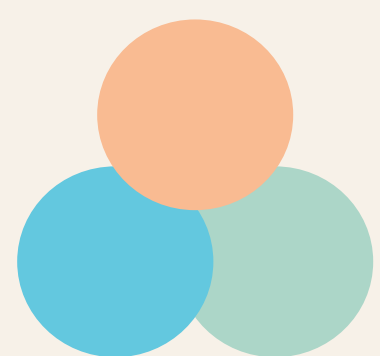
## COLD SHAKES & MALTS



### **MADE TO ORDER SHAKE**

**9<sup>49</sup>**

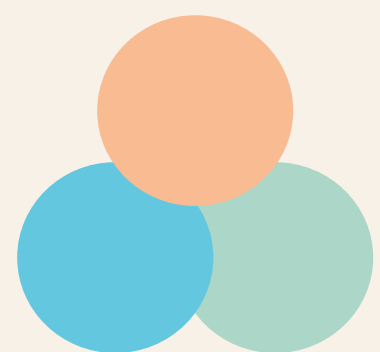
**ANY ICE CREAM OR SORBET** *WITH WHOLE MILK*



### **CLASSIC VANILLA MALT**

**9<sup>99</sup>**

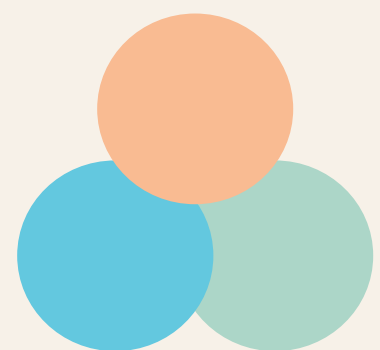
**MADAGASCAR VANILLA ICE CREAM**  
*WITH WHOLE MILK & MALTED MILK POWDER*



### **CHOCOLATE SHAKE**

**9<sup>99</sup>**

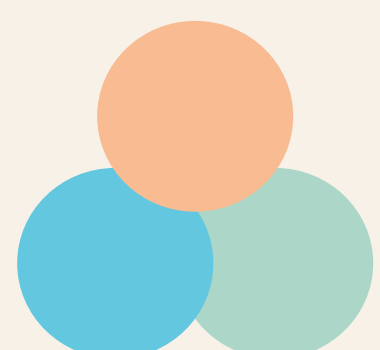
**BELGIAN CHOCOLATE ICE CREAM** *WITH WHOLE MILK*



### **JAVA SHAKE**

**9<sup>99</sup>**

**ESPRESSO ICE CREAM** *WITH WHOLE MILK*



### **STRAWBERRY SORBET SMOOTHIE**

**9<sup>49</sup>**

**STRAWBERRY SORBET** *WITH NON-FAT MILK*